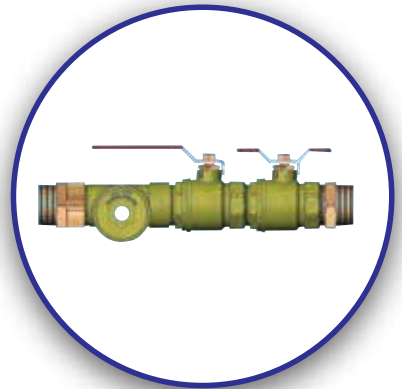




SERVING THE NEEDS OF THE FIRE PROTECTION INDUSTRY

BRITISH MANUFACTURER OF SPRINKLERS & SYSTEM ACCESSORIES



Approved BY UAE, QATAR & OMAN CIVIL DEFENCE

e-mail: uae@rapidrop.com

web: www.rapidrop.com



SERVING THE NEEDS OF THE FIRE PROTECTION INDUSTRY

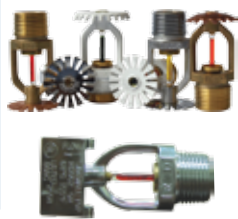
Flexible Sprinkler Connection



- SP Model - UL Listed and LPCB Approved (certificate no 566a)
- SPB Model - FM and VdS Approved
- Max Working Pressure for UL/VdS and FM version 12 bar
- Max Working Pressure for LPCB is 16 bar.
- Stainless Steel-304 pipes in length from 0.8M to 3.2M.
- Supplied with support bar of different length to suit any Ceiling tile size.
- Variety of brackets available to suit different ceiling profiles and Recessed or Concealed sprinklers



Sprinklers



- UL Listed & LPCB* Approved (* Selected Models)
- Standard Spray Upright / Pendent with Brass/ Chrome Finish
- Horizontal Side Wall with Brass/Chrome Finish.
- Flush - Concealed / Horizontal Side Wall Sprinkler Head
- All of the above available in Standard Response / Quick Response
- RD 105 Concealed Sprinkler Head Fusible Element type 72° C
- UL Listed - Quick Response / FM Approved - Standard Response



Sprinkler Accessories



- Sprinkler Cabinets to accommodate 6, 12 or 24 heads
- Single or Double Escutcheons available in Chrome or White options
- Installation and Service wrenches for Standard and Concealed heads





SERVING THE NEEDS OF THE FIRE PROTECTION INDUSTRY

Wet Alarm Valve - 175 psi



- UL Listed and FM / LPCB Approved. Sizes from 3" to 8"
- Maximum Working Pressure 175 psi.
- Flange x Flange, Flange x Grooved OR Grooved x Grooved options available
- FM and European trim available on request.



Dry Alarm Valve - 175 psi



- UL Listed and FM Approved. Sizes from 3" to 6"
- Maximum Working Pressure 175 psi.
- Flange x Flange, Flange x Grooved & Grooved options available



OS&Y Gate Valve –300 psi (Resilient Wedge Type)



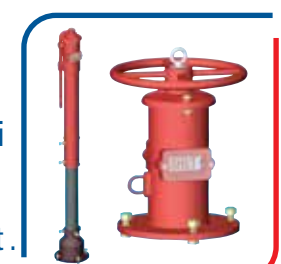
- UL Listed and FM Approved Sizes from 2½" to 12"
- Body Ductile Iron–Max Working Pressure 300 psi
- Sizes 14", 16", 18" – UL Listed, Max Working Pressure 250 psi
- Sizes 20", 24" – UL Listed, Max Working Pressure 200 psi
- ANSI Flanges as standard supply PN-16 / PN- 25 available on request
- Flange x Flange & Grooved x Grooved



Non Rising Stem Gate Valve - 300 psi (Resilient Wedge Type)



- UL Listed and FM Approved Sizes from 2½" to 12"
- Body Ductile Iron–Max Working Pressure 300 psi
- Sizes 14", 16", 18" – UL Listed, Max Working Pressure 250 psi
- Sizes 20", 24" – UL Listed, Max Working Pressure 200 psi
- ANSI Flanges as standard supply PN-16 / PN- 25 available on request .
(Flange x Flange, Flange x Mech Joint, Mech Joint x Mech Joint)
- UL/FM Vertical and Wall post indicators available



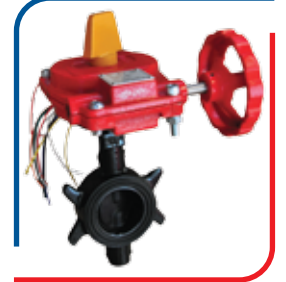


SERVING THE NEEDS OF THE FIRE PROTECTION INDUSTRY

Butterfly Valve - 300 psi



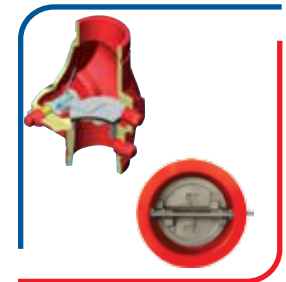
- UL Listed and FM Approved - Sizes from 2½" to 8"
- Grooved / Wafer Type - Max Working Pressure 300 psi
- Epoxy coated finish.
- Factory installed double tamper switch for indoor and outdoor applications.
- Sizes 1 1/4" - 2" Max Working Pressure 175 psi Threaded Type



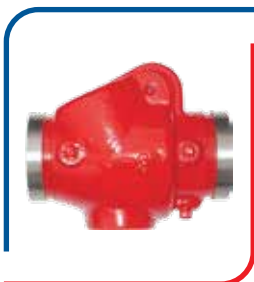
Check Valve - 300 psi



- UL Listed and FM Approved
- Grooved type Sizes from 2" to 8"
Maximum Working Pressure 300 PSI
- Flanged type Sizes from 2" to 12"
Maximum Working Pressure 300 PSI
- Wafer type Sizes from 4" to 12" (only UL Listed)
Maximum Working Pressure 175 PSI



Check Valve - 350 psi



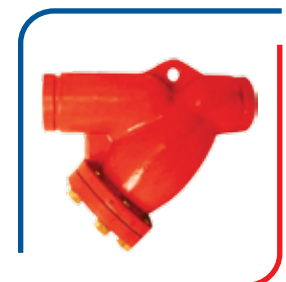
- Fig 304 – Grooved Ends. UL Listed & FM Approved.
- UL Listed Sizes 2" to 8" / FM Approved Sizes 2 1/2" to 8"
Maximum Working Pressure 350 PSI
- Fig 305 – Flanged Ends. UL Listed.
- Sizes from 2" – 8" Maximum Working Pressure 350 PSI



Strainers - 175 psi



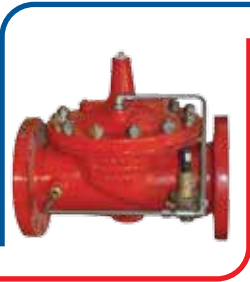
- UL Listed. Maximum Working Pressure – 175 PSI.
- Grooved - Body Ductile Iron. Sizes from 2 ½" – 12"
- Flanged - Body Cast Iron. Sizes from 2 ½" – 12"
- Available in PN16/ANSI Flanged version.





SERVING THE NEEDS OF THE FIRE PROTECTION INDUSTRY

Pressure Reducing Valve



- UL Listed - Globe or Angle Pattern
- Available in Grooved or Flanged version
- Available in Class 150 or Class 300 Pressure ratings



Pressure Relief Valve:



- UL Listed / FM Approved
- Available in Straight or Angle Pattern
- Available in Class 150 or Class 300 Pressure ratings



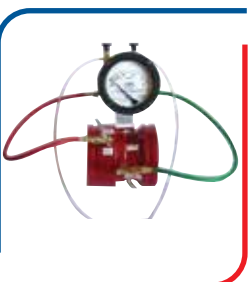
Electrical Switches



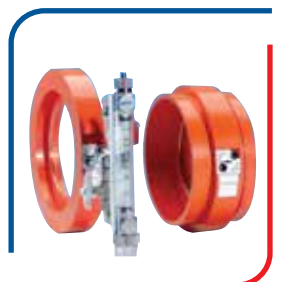
- Water flow detectors - UL Listed / FM Approved
Sizes from 2" to 8"
- EPS 10 - Pressure Switch - UL Listed / FM Approved
- OSY 2 - Gate Valve Supervisory switch
UL Listed / FM Approved
- Explosion Proof Models Available on Request



Flow Meters



- FM Approved, Venturi Type Flow Meters
- Flow rate from 100 gpm to 5000 gpm
- Options of Flanged, Grooved or Butt Welded Available
- LPCB Models also available on request
- Pipe sizes from 2.5" to 12"



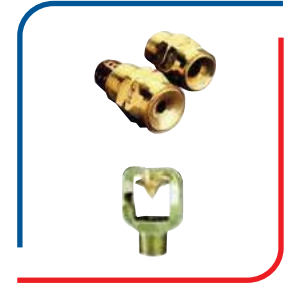


SERVING THE NEEDS OF THE FIRE PROTECTION INDUSTRY

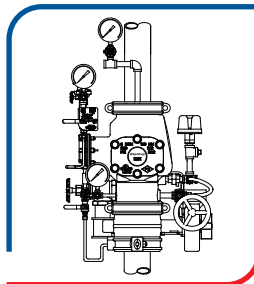
Deluge Valve & Spray Nozzle



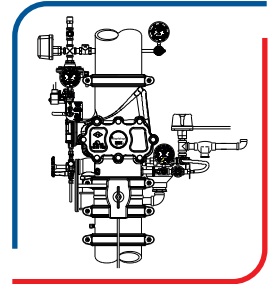
- UL Listed. Max Working Pressure -250 PSI
- Fig 501 - Cast Steel ASTM A216 WCB construction
- Fig 502 - Ductile Iron ASTM A536 construction
- Globe Pattern - Size: 2" – 8"
- Vertical or Horizontal mounting
- Spray Nozzle – High / Medium Velocity
- Available in variety of K Factor & Spray Angle



Pre-Action - Deluge Valve



- UL Listed / FM Approved
- Available in Single / Double Interlock options
- Sizes 2" - 8"*
- 8" FM Approved
- Electric / Wet / Pneumatic Release Options Available



Pre-Trimmed - Deluge Valve



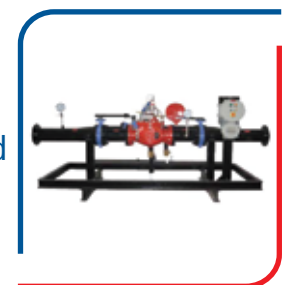
- UL Listed-Cast Steel Body Deluge Valve
- Straight Discharge* –Sizes 2" to 16"
- Angle Discharge* –Sizes 2" to 8"
- Pre-Piped SS Trim
- *Sizes 4", 6" & 8" are UL Listed



Deluge Skid



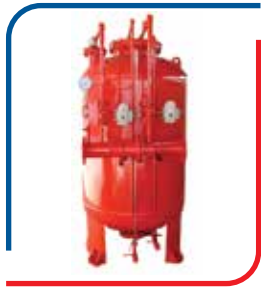
- Professionally pre-assembled, factory tested deluge valve systems
- Modular package with UL Listed Rapidrop Deluge Valve
- Downstream, upstream and bypass butterfly valves supplied
- Pressure switch, solenoid valve mounted, pre-wired & terminated in to junction box
- Custom design option available.
- Cost effective and reduced installation time





SERVING THE NEEDS OF THE FIRE PROTECTION INDUSTRY

Foam Bladder Tank



- Vertical upto 1000 Ltrs
- Horizontal from 1000 upto 15,000 Ltrs
- Maximum working pressure 12 Bar (175 PSI)
- Carbon Steel Construction –Made to ASME Code Section VIII
- Compatible with all foam concentrates
- Proportioner pre-piped on to the tank (Optional)
- Available in UL / NON UL Options



Foam Chamber / Foam Pourer



- Model –FC Available in Sizes 2" to 6".
- Flow from 100 to 4000 LPM (26 to 1056 GPM)
- Working pressure 2.8 to 7 Bar (40 to 100 PSI)
- Choice of various deflectors

FOAM POURER

- Sizes 2", 2½", 3" flow from 21 to 370 GPM
- Available in UL / FM / NON Approved Options



Monitor



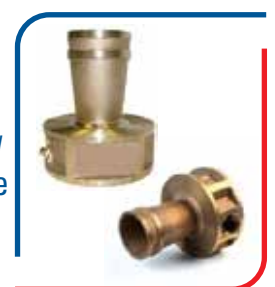
- Available for Industrial / Fire Service Applications
- Nozzles suitable for different application available
- Available in UL / FM / NON Approved Options



Foam Proportioner / Ratio Controller



- Corrosion resistant Bronze or Stainless Steel construction.
- 3", 4", 6" & 8" with flow from 270 to 18500 LPM (71 to 4887 US GPM)
- Used with Bladder Tank or Inline Balance Pressure Proportioner for variable flow
- Caters to 3" (%) or 6" (%) induction simply by changing orifice
- Service Pressure : Maximum 3 to 14 bar (44 to 200 psi)
- Available in UL / NON UL Options





SERVING THE NEEDS OF THE FIRE PROTECTION INDUSTRY

Dry / Wet Riser Equipment



- Breeching Inlet - 2 Way / 4 Way
- Landing Valve – Flange / Threaded Type
- High Pressure Regulating Landing Valve
- Air Release Valve



Fire Hydrant



- DRY Barrel Hydrant with Duct Foot Bend
- Model RD-FM1510 - Size 51/4" – FM Approved
- Other Sizes Available in NON UL / NON FM Approved Version
- Body - Cast Iron / Duct Foot Bend - Ductile Iron
- Wet Pillar Hydrant –with Oblique Landing Valve & female coupling as per BS 336 Cast Iron body



Fire Hose Reels



- LPCB Approved Fire Hose Reels
- Fire hose to EN-694 and Drum to EN-671
- Available in 25mm and 19 mm sizes
- Available in Swinging, Manual and Automatic versions
- Different options of Cabinets available





SERVING THE NEEDS OF THE FIRE PROTECTION INDUSTRY

Pipe Fitting [Grooved]



Grooved couplings and Fittings:

- UL Listed and FM, VdS & LPCB Approved
- Full range of Couplings, Tees, Elbows and other fittings.
- Max working pressure upto 44 bar dependent on size, style and approval



Pipe Fitting [Threaded]



- UL Listed, FM Approved & Kitemark
- Malleable iron fittings in GI and Black Steel.
- 25 bar working pressure [-20 C to 120 C]
- Full range of Tees, Elbows and other fittings.



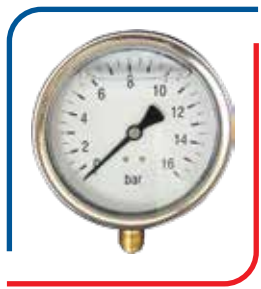
Pipe Hangers & Accessories



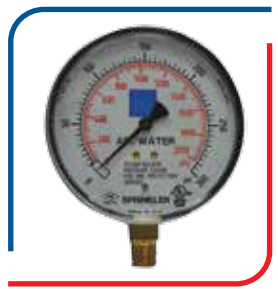
- UL Listed & FM Approved
- Swivel Hanger, Clevis Hanger & Beam Clamps
- U bolts, Threaded Rods and Strut Channels



Pressure Gauges



- UL Listed & FM Approved
- Range 0 - 300 PSI
- 4" dial gauge, 1/4" NPT Connection
- 0-16 bar oil filled gauge available (Non UL / FM)



Visit – www.rapidrop.com to download Detailed Technical Datasheet of our products.

Contact us on uae@rapidrop.com for further details / clarification on our range of products & availability.

e-mail: uae@rapidrop.com

web: www.rapidrop.com



SERVING THE NEEDS OF THE FIRE PROTECTION INDUSTRY

Coming Soon

Lay Flat Fire Hose & Accessories



- UL Listed & FM Approved fire hose
- Colour : White / Red. Working Pressure - 17 Bar
- Outer: High-strength synthetic yarn
- Inner : EPDM Lining
- Inner diameter: 1 ½" & 2 1/2". Other Sizes available on request
- Length – 75 ft & 100 ft - Other Lengths available on request.



Fire Extinguishers



- Available in Portable and Trolley type versions
- Dry powder type available in sizes of 1 ,2,4.5,6,9,12 kg.
- CO2 available in 2,4.5,6 kg.
- Water and Foam type available in 9 lit cap.
- Bigger capacities available in Trolley type versions.



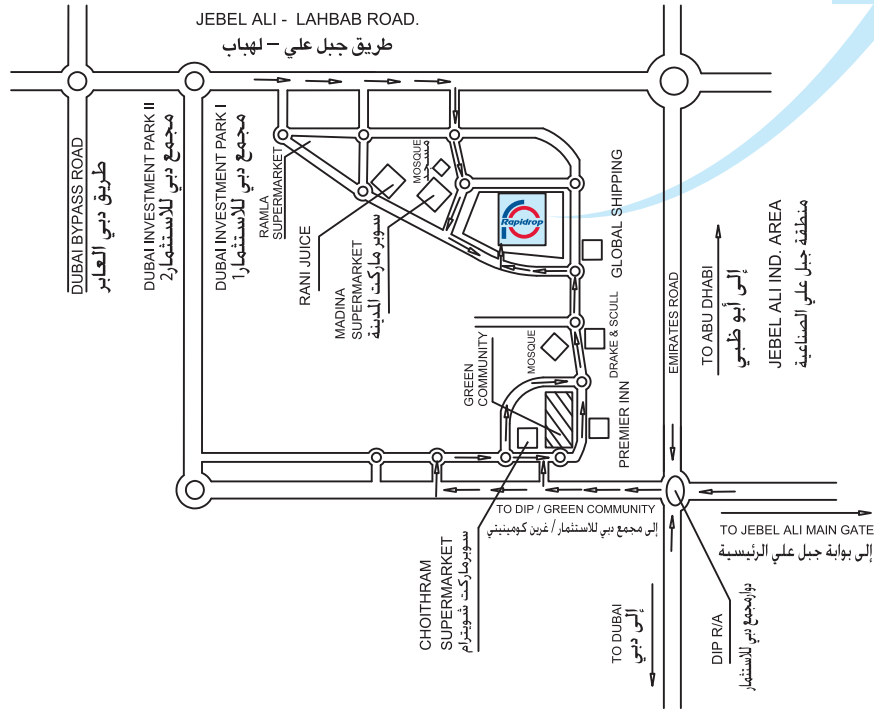
Wet / Dry Riser Equipment





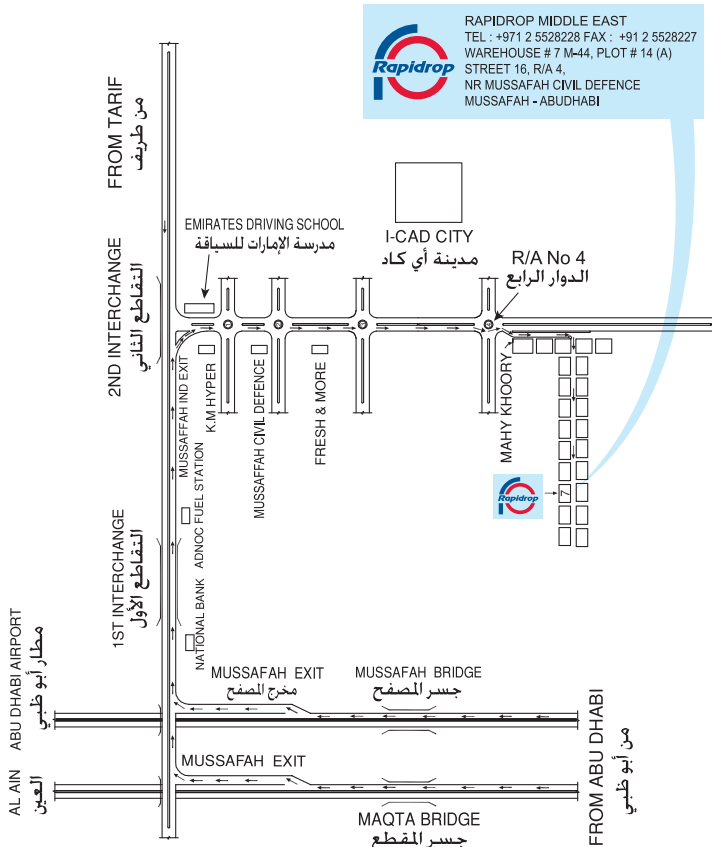
SERVING THE NEEDS OF THE FIRE PROTECTION INDUSTRY

Location Map (Dubai)



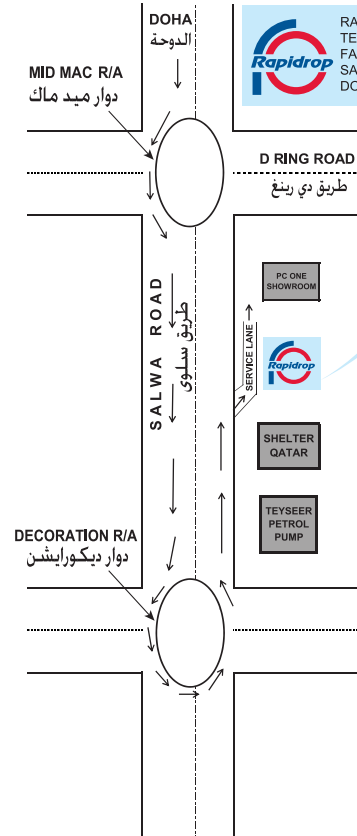
RAPIDROP MIDDLE EAST
GATE # 8, BUILDING # 7
WAREHOUSE # 5
TEL : 04 - 8856671
FAX : 04 - 8856672

Location Map (Abu Dhabi)



RAPIDROP MIDDLE EAST
TEL : +971 2 5528228 FAX : +91 2 5528227
WAREHOUSE # 7 M-44, PLOT # 14 (A)
STREET 16, R/A 4,
NR MUSSAFAH CIVIL DEFENCE
MUSSAFAH - ABUDHABI

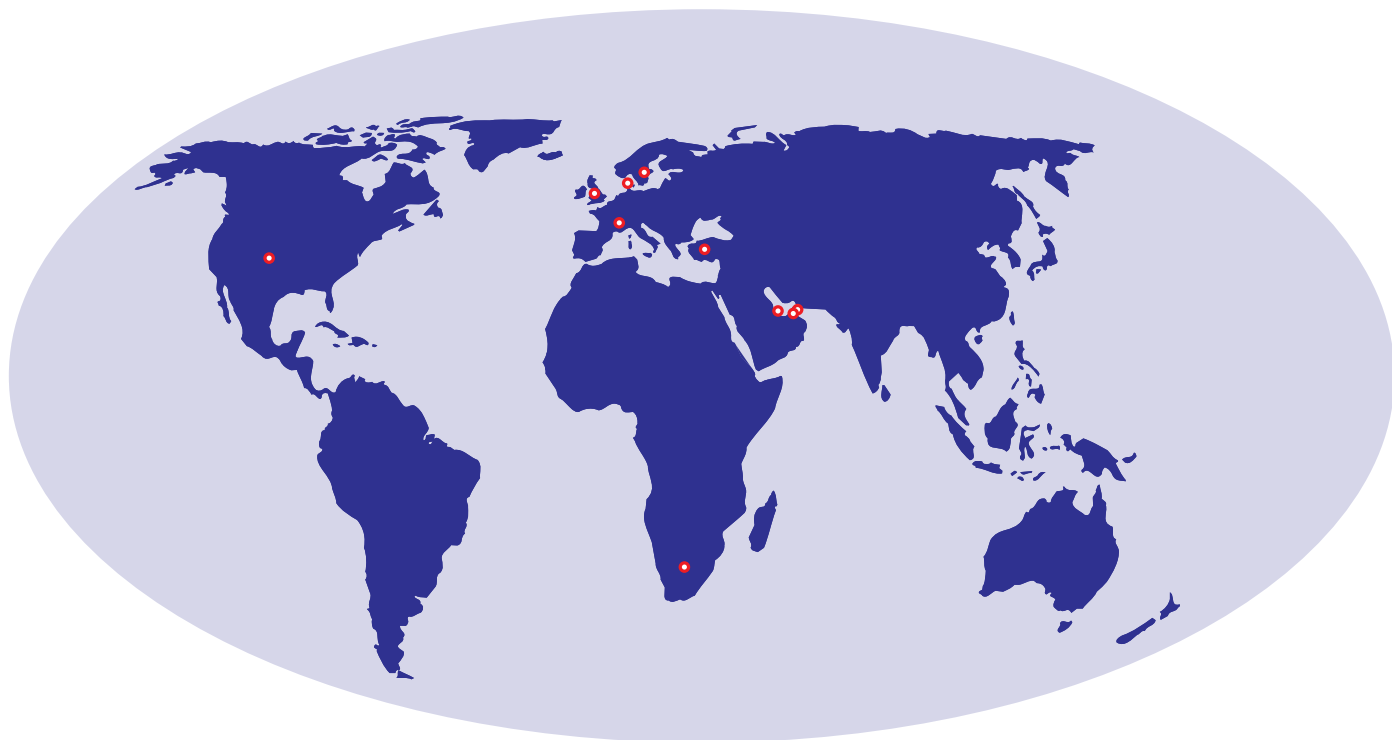
Location Map (Qatar)



RAPIDROP QATAR LLC
TEL : +974 401 61482 / 484
FAX : +974 401 61483
SALWA ROAD, P.O.BOX 17481
DOHA - QATAR



SERVING THE NEEDS OF THE FIRE PROTECTION INDUSTRY



DISTRIBUTION CENTERS :

UK | France | Denmark | Turkey | Dubai, Abu Dhabi - UAE | Qatar | South Africa | Sweden | USA

MIDDLE EAST OFFICES

UAE

RAPIDROP MIDDLE EAST TRADING LLC

TEL : +971 4 8856671 FAX : +971 4 8856672
STORES : TEL : +971 4 885 62 55, WAREHOUSE # 5
BUILDING NO. 7, DUBAI INVESTMENT PARK
P.O. BOX : 232031, DUBAI - UAE

RAPIDROP GLOBAL FZCO

TEL : +971 4 8808221
FAX : +971 4 8808229
P.O. Box : 17662, JAFZA
JEBEL ALI FREEZONE, DUBAI - UAE

RAPIDROP MIDDLE EAST LLC

TEL : +971 2 5528228 FAX : +971 2 5528227
WAREHOUSE # 7 M-44, PLOT # 14 (A)
STREET 16, R/A 4, NR MUSSAFAH CIVIL DEFENCE
MUSSAFAH - ABUDHABI

QATAR

RAPIDROP QATAR LLC

TEL : +974 401 61482 / 484, FAX : +974 401 61483, SALWA ROAD, P.O.BOX 17481, DOHA - QATAR

HEAD OFFICE

RAPIDROP GLOBAL LIMITED

TEL : +44 1733 847 510, FAX : +44 1733 553 958

RUTLAND BUSINESS PARK,
NEWARK ROAD, PETERBOROUGH, U.K- PE1 5WA



AN ISO 9001 : 2008 COMPANY

e-mail: uae@rapidrop.com

web: www.rapidrop.com